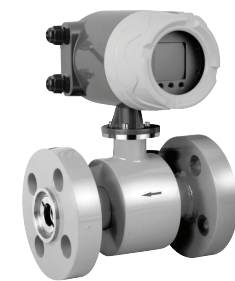


ELECTROMAGNETIC FLOW METER  
KF700 SERIES

Flow Measurement  
& Monitoring



MODEL	FA	JA	VA	KA	GA
SIZE	DN10 – DN2000	DN25 – DN150	DN10 – DN150	DN25 – DN100	DN15 – DN150
LINING	PTFE, HARD RUBBER, F46, PFA	PTFE, HARD RUBBER, F46, PFA	PTFE, PFA, F46	PTFE, PFA, F46	PFA, F46
ELECTRODE	SS316L, HC, HB, TI, PT, TA				
CONNECTION	FLANGE	CLAMP (WAFER)	THREAD	TRI-CLAMP	FLANGE
CONNECTION STANDARD	DIN, ANSI, JIS	DIN, ANSI, JIS	BSP, NPT	DIN	GB/T9113-2000
OP PRESSURE	6, 10, 16 BAR	10 BAR	10 BAR	10 BAR	≤ 250 BAR
ENVIRONMENT TEMP	-20 TO 65°C				
MEDIUM TEMPERATURE	-20°C TO 80°C (COMPACT) , -20°C TO 120°C (REMOTE)				
MEDIUM CONDUCTIVITY	≥ 5 μS/CM, ≥ 20 μS/CM (SOFTENED WATER)				
VELOCITY OF FLOW	0.3 – 10 M/S				
ACCURACY	±0.5% OF R.S				
OUTPUT SIGNAL	4-20MA, PULSE, FREQUENCY				
COMMUNICATION	RS485 MODBUS, HART (OPTIONAL)				
DISPLAY	GRAPHIC LCD 128X64 PIXELS WITH BACKLIGHTED				
POWER SUPPLY	220V AC (50/60 HZ), 24V DC				



**ELECTROMAGNETIC FLOW METER  
KF700 SERIES CONVERTER**

Flow Measurement  
& Monitoring



MODEL	MF710	MF720	MF750	MF820
INSTALLATION METHOD	COMPACT / REMOTE	COMPACT / REMOTE	REMOTE	
POWER SUPPLY	220V AC (50/60 HZ), 24V DC	220V AC (50/60 HZ), 24V DC	24V DC	3.6V LITHIUM BATTERY
ANALOGUE OUTPUT SIGNAL	4-20 MA	4-20 MA	4-20 MA	4-20 MA
DIGITAL OUTPUT SIGNAL	O.C. PULSE / FREQUENCY FOR TOTALIZING	O.C. PULSE / FREQUENCY FOR TOTALIZING	O.C. PULSE / FREQUENCY FOR TOTALIZING	FREQUENCY FOR TOTALIZING
COMMUNICATION OUTPUT SIGNAL	RS485 MODBUS	RS485 MODBUS / HART PROTOCOL	RS485 MODBUS	N/A
OPERATING KEYPAD	4 KEYS BUTTON	3 KEYS BUTTON	4 KEYS BUTTON	4 KEYS BUTTON
ENVIRONMENTAL TEMPERATURE	-25 TO 60°C	-25 TO 60°C	-25 TO 60°C	-10 TO 60°C
ACCURACY	±0.5% OF R.S	±0.5% OF R.S	±0.5% OF R.S	±1% OF R.S
PROTECTION CLASS	IP67	IP67	IP65	IP65
DISPLAY	GRAPHIC LCD 128X64 PIXELS WITH BACKLIGHTED 6 DIGITS OF INSTANTANEOUS READING, 10 DIGITS OF TOTALIZER READING			



ELECTROMAGNETIC FLOW METER

Flow Measurement  
& Monitoring

FLOW RANGE CHART BY PIPE SIZE

DN (mm)	Min Flow (m3/hr)	Flow Range (m3/hr)
10	0.08	0.16, 0.2, 0.25, 0.3, 0.4, 0.5, 0.6, 0.8, 1.0, 1.2, 1.6, 2.0, 2.5
15	0.2	0.4, 0.5, 0.6, 0.8, 1.0, 1.2, 1.6, 2.0, 2.5, 3.0, 4.0, 5.0, 6.0
20	0.3	0.6, 0.8, 1.0, 1.2, 1.6, 2.0, 2.5, 3.0, 4.0, 5.0, 6.0, 8.0, 10
25	0.5	1.0, 1.2, 1.6, 2.0, 2.5, 3.0, 4.0, 5.0, 6.0, 8.0, 10, 12, 14, 16
32	0.8	1.6, 2.0, 2.5, 3.0, 4.0, 5.0, 6.0, 8.0, 10, 12, 16, 20, 25
40	1.2	2.5, 3.0, 4.0, 5.0, 6.0, 8.0, 10, 12, 16, 20, 25, 30, 40
50	2	4.0, 5.0, 6.0, 8.0, 10, 12, 16, 20, 25, 30, 40, 50, 60, 70
65	3.5	6.0, 8.0, 10, 12, 16, 20, 25, 30, 40, 50, 60, 80, 100, 120
80	5	10, 12, 16, 20, 25, 30, 40, 50, 60, 80, 100, 120, 160
100	8	16, 20, 25, 30, 40, 50, 60, 80, 100, 120, 160, 200, 250
125	12	25, 30, 40, 50, 60, 80, 100, 120, 160, 200, 250, 300, 400
150	18	40, 50, 60, 80, 100, 120, 160, 200, 250, 300, 400, 500, 600
200	30	60, 80, 100, 120, 160, 200, 250, 300, 400, 500, 600, 800, 1000
250	50	100, 120, 160, 200, 250, 300, 400, 500, 600, 800, 1000, 1200, 1600
300	70	160, 200, 250, 300, 400, 500, 600, 800, 1000, 1200, 1600, 2000, 2500
350	100	200, 250, 300, 400, 500, 600, 800, 1000, 1200, 1600, 2000, 2500, 3000
400	120	250, 300, 400, 500, 600, 800, 1000, 1200, 1600, 2000, 2500, 3000, 4000
450	160	300, 400, 500, 600, 800, 1000, 1200, 1600, 2000, 2500, 3000, 4000, 5000
500	200	400, 500, 600, 800, 1000, 1200, 1600, 2000, 2500, 3000, 4000, 5000, 6000
600	300	600, 800, 1000, 1200, 1600, 2000, 2500, 3000, 4000, 5000, 6000, 10000
700	400	800, 1000, 1200, 1600, 2000, 2500, 3000, 4000, 5000, 6000, 10000, 12000
800	500	1000, 1200, 1600, 2000, 2500, 3000, 4000, 5000, 6000, 10000, 12000, 16000
900	650	1200, 1600, 2000, 2500, 3000, 4000, 6000, 8000, 10000, 12000, 16000, 18000
1000	800	1600, 2000, 2500, 3000, 4000, 5000, 6000, 8000, 10000, 12000, 16000, 20000
1200	1200	2500, 3000, 4000, 5000, 6000, 8000, 10000, 12000, 16000, 20000, 25000, 30000
1400	1500	3000, 4000, 5000, 6000, 8000, 10000, 12000, 16000, 20000, 25000, 30000, 40000
1600	2000	4000, 5000, 6000, 8000, 10000, 16000, 20000, 25000, 30000, 40000, 50000, 60000
1800	2500	5000, 6000, 8000, 10000, 12000, 16000, 20000, 25000, 30000, 40000, 50000, 60000
2000	3000	6000, 8000, 10000, 12000, 16000, 20000, 40000, 50000, 60000, 80000, 100000

Best accuracy flow range in specific flowrate

I-SYSTEM MEASUREMENT  
www.ismesb.com



ELECTROMAGNETIC FLOW METER  
FLOW RANGE CHART BY PIPE SIZE  
I-SYSTEM

02-2016

101012

I-SYSTEM

101/012

ELECTROMAGNETIC FLOW METER

Flow Measurement  
& Monitoring

ORDERING CHART

Ordering Number						
Model	FA	Flanged Type	JA	Clamp Type (Wafer)	VA	Threaded Type
	KA	Tri-clamp Type	GA	High Pressure Flanged Type		
Size						
	DN 10	DN 50	DN 200	DN 500	DN 1200	
	DN 15	DN 65	DN 250	DN 600	DN 1400	
	DN 20	DN 80	DN 300	DN 700	DN 1600	
	DN 25	DN 100	DN 350	DN 800	DN 1800	
	DN 32	DN 125	DN 400	DN 900	DN 2000	
	DN 40	DN 150	DN 450	DN 1000		
Electrode Material						
	316L	Stainless Steel	Hc	Hastelloy C4	Hb	Hastelloy B2
	Ti	Titanium	Ta	Tantalum	Pt	Platinum
Lining Material						
	PTFE			PFA	F46	
	Hard Rubber (FA & JA Series)					
Power Supply						
	AC	220V AC	DC	24V DC	BT	3.6V Lithium Battery
In / Output						
	MF710	Compact	4-20mA, pulse/frequency output (active)			
	MF720	Remote	RS485/HART Protocol (Optional Communication)			
	MF730	Remote	4-20mA, pulse/frequency output (active), RS485/HART Protocol (Optional Communication)			
	MF820	Compact	Frequency output (passive)			
	MF750	Remote	4-20mA, pulse/frequency output (passive), RS485 (Optional Communication)			
Cable Length (Remote Type)						
		10m	Standard 10 meter	OP	Optional (Max 100m)	
FA	DN15	Hc	PTFE	AC	MF710-R	10m

I-SYSTEM MEASUREMENT  
www.ismesb.com



ELECTROMAGNETIC FLOW METER  
ORDERING CHART  
I-SYSTEM

03-2020

101012

I-SYSTEM

101/012

ELECTROMAGNETIC FLOW METER  
**INFORMATION REQUISITION FORM**

Flow Measurement  
 & Monitoring

INSTALLATION TYPE		<input type="checkbox"/> COMPACT	<input type="checkbox"/> REMOTE			
PIPE SIZE		DN (MM) _____				
CONVERTER	MODEL	<input type="checkbox"/> MF710 (AC / DC)	<input type="checkbox"/> MF720 (AC / DC)	<input type="checkbox"/> MF730 (AC / DC - REMOTE)	<input type="checkbox"/> MF820 (BATTERY)	
	MEDIUM	_____				
	OPERATING PRESSURE	_____ BAR				
	OPERATING TEMPERATURE	_____ °C				
	FLOW RATE	MIN FLOW _____ M3/HR	AVERAGE FLOW _____ M3/HR	MAX FLOW _____ M3/HR		
	MEDIUM VISCOSITY	<input type="checkbox"/> WORKING CONDITION	<input type="checkbox"/> STANDARD CONDITION	_____ KG/M3	OR	_____ G/CM3
	OUTPUT SIGNAL	<input type="checkbox"/> 4-20MA, PULSE / FREQUENCY OUTPUT <input type="checkbox"/> RS485 OR HART (COMMUNICATION)				
	POWER SUPPLY	<input type="checkbox"/> 220V AC	<input type="checkbox"/> 24V DC	<input type="checkbox"/> BATTERY (WITHOUT OUTPUT SIGNAL)		
SENSOR	CONNECTION TYPE	<input type="checkbox"/> FLANGE	<input type="checkbox"/> WAFER	<input type="checkbox"/> THREADED	<input type="checkbox"/> TRI-CLAMP	<input type="checkbox"/> HIGH PRESSURE
	CONNECTION STANDARD	<input type="checkbox"/> DIN	<input type="checkbox"/> ANSI	<input type="checkbox"/> JIS	<input type="checkbox"/> BSP	
	ELECTRODE MATERIAL	<input type="checkbox"/> SS316L	<input type="checkbox"/> HASTELLOY C	<input type="checkbox"/> HASTELLOY B	<input type="checkbox"/> TITANIUM	<input type="checkbox"/> TANTALUM <input type="checkbox"/> PLATINUM
	LINING MATERIAL	<input type="checkbox"/> PTFE	<input type="checkbox"/> HARD RUBBER	<input type="checkbox"/> F46	<input type="checkbox"/> PFA	
	PROTECTION ENCLOSURE	<input type="checkbox"/> IP65	<input type="checkbox"/> IP67	<input type="checkbox"/> IP68 (REMOTE)		

